

## TECHNICAL DATA *Bublon Perlite Spheres Type 1*

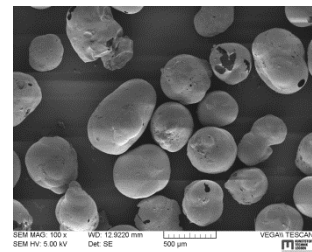
### Insulation Grades

Light Weight Aggregate acc. to EN 13055-1

#### Typical Applications:

Insulating plaster & render, floor screeds, filler, thermal & acoustic insulation boards, fire proofing.

Grain size range [ $\mu\text{m}$ ] *	200 - 1500
Bulk density [ $\text{kg}/\text{m}^3$ ] *	80 - 150
True Density [ $\text{kg}/\text{m}^3$ ] *	140 - 270
Thermal conductivity $\lambda$ [ $\text{W}/(\text{m}\cdot\text{K})$ ]	0,042 - 0,054
Mechanical crush strength [ $\text{N}/\text{mm}^2$ ] **	0,1 - 0,5



\*) PSD band, BD and TD upon customer's request resp. custom-tailored to individual application

\*\*\*) according to EN 13055-1:2002

### CHEMICAL ANALYSIS

Component	[%]
SiO <sub>2</sub>	75 – 78
Al <sub>2</sub> O <sub>3</sub>	11,5 – 14,6
K <sub>2</sub> O	5,0 – 6,0
Na <sub>2</sub> O	3,0 – 4,5
Fe <sub>2</sub> O <sub>3</sub>	0,5 – 1,1
CaO	< 1,0
MgO	< 0,3

### ADDITIONAL PROPERTIES

softening point	~1250 °C
softening range	1250 – 1500 °C
color	white to off-white
pH-value	6,5 – 8,0
surface moisture	< 0,2 mass %
granule shape	egg / potato

The properties shown on this data sheet represent typical average results generated using standard test methods, conducted under controlled conditions and cannot be considered to be guaranteed specifications. Properties are subject to normal manufacturing statistical standard deviation ranges and Bublon GmbH reserves the right to modify the properties and specifications at any time without prior notice.

Bublon GmbH disclaims any expressed or implied warranties based on this sheet.